

## Energy portion of the irrigation rate increases

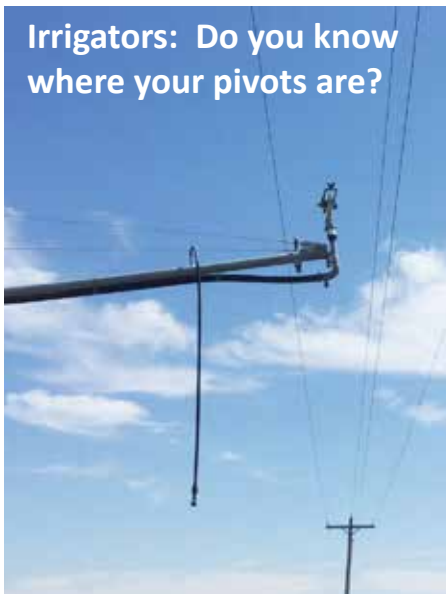
In 2016, a one percent increase is being applied to the energy portion of the irrigation rate. The previous rate was set prior to the 2013 irrigation season.

The increase helps cover the increased cost of wholesale power from Nebraska Public Power District.

In the future, Dawson PPD will be looking at the demand portion of the irrigation rate, making sure that it stays in balance with the energy portion. The district will consider a change from seasonal to monthly billing.

| Rate          | Fixed charge per HP | Energy per kWh in 2016 | Previous energy rate (adopted in 2013) |
|---------------|---------------------|------------------------|--|
| 6 Day Control | \$28.22             | 5.58 cents             | 5.52 cents                             |
| 4 Day Control | \$33.72             | 7.09 cents             | 7.02 cents                             |
| 3 Day Control | \$38.72             | 7.70 cents             | 7.62 cents                             |
| 2 Day Control | \$43.72             | 8.30 cents             | 8.22 cents                             |
| 1 Day Control | \$48.72             | 8.91 cents             | 8.82 cents                             |
| Uncontrolled  | \$53.72             | 9.51 cents             | 9.42 cents                             |
| Stand-by      | \$22.50             |                        |  |

## Prioritize safety this irrigation season



**Irrigators: Do you know where your pivots are?**

If a pivot end-gun fails to properly turn off, it can pose a hazard while shooting water onto a power line energized at 7,200 volts. When designing irrigation systems, please keep safety in mind. Safety never hurts.

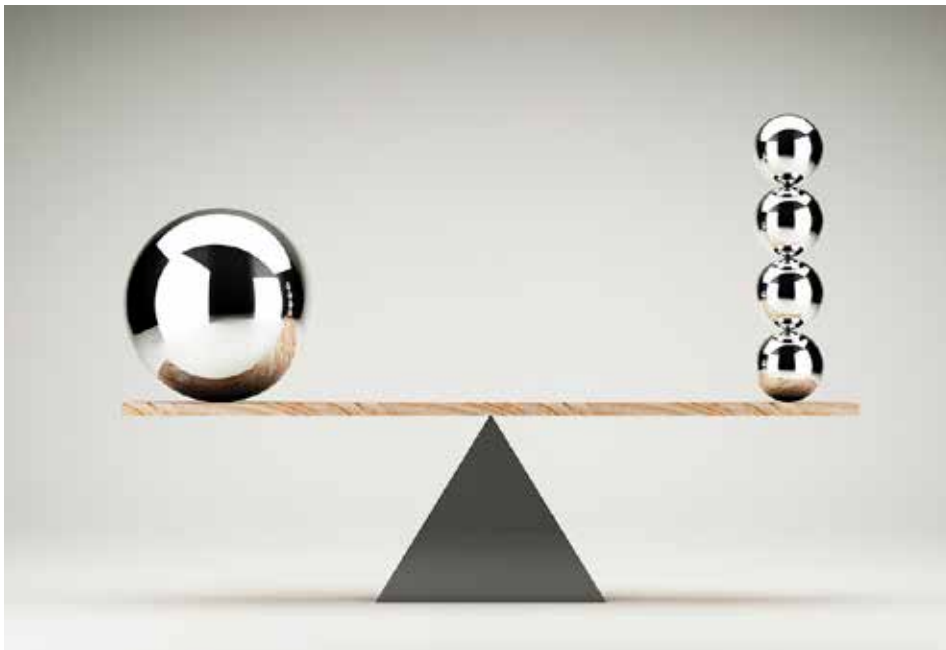
- Make sure that irrigation system wiring is properly grounded. Before the start of each irrigation season, have a qualified electrician check each pump and wiring.
- Position the water jet streams so that there is no chance of them spraying onto power lines. If this happens, the entire system could become energized, creating a danger for anyone nearby.
- If fuses continually blow or circuit breakers repeatedly trip, have a professional check the wiring. This could indicate a potential electrical hazard.
- Always shut off and lock the master electrical control switch before servicing the machine.
- Take some time to survey your surroundings before moving equipment. Look up and around you; note any power lines that could be close enough to come into contact with equipment—and stay away.



A place to park? It may be convenient for the sprayer operator, but parking between a substation and several power poles is risky. If the booms were accidentally extended, they could easily conduct electricity and become a deadly hazard.

## Control hours:

# Balance is the goal



### ***Q. How does Dawson PPD decide which customers to control for load management?***

**A.** Dawson PPD set up the load management program to balance the hours of control between similar groups of customers. The level of control is determined by the customer.

To do this, customers are grouped by load control option. These groups need to be close to the same size, as determined by option. For example, the two day Monday & Tuesday control group has to be similar in horsepower to the Wednesday & Thursday group.

The daily order for load control rotates through a list. The first group controlled is the group that only allows control on that specific day. The second group selected is the two day control group. This process proceeds until the last group, the six day control group, is selected.

The order is determined by how many hours the group could be controlled each week. Because the one day control group only has up to 12 possible control hours per week, they're the first group to be chosen. The six day control group, which can experience up to 72 of control per week, is the last chosen. The six day control group can be selected for up to 12 hours of control per day, Monday through Saturday.

The goal is to control enough load to meet Nebraska Public Power District's needs yet allow farmers enough hours to run irrigation systems effectively.

### **Daily order of groups selected for control:**

1. Single day control for that specific day.
2. Two day control groups that include the specific day.
3. Three day control groups that include the specific day.
4. Four day control groups that include the specific day.
5. Six day control group.

## ***Dawson PPD irrigation by the numbers (2015 data)***

|  |             |
|--|-------------|
| Irrigation services                        | 5,721       |
| Kilowatt hours billed                      | 124,269,698 |
| Total irrigation horsepower                | 254,270     |
| Average horsepower per service             | 44          |
| Average hours used per service for pumping | 611         |

### ***Load control days per year***

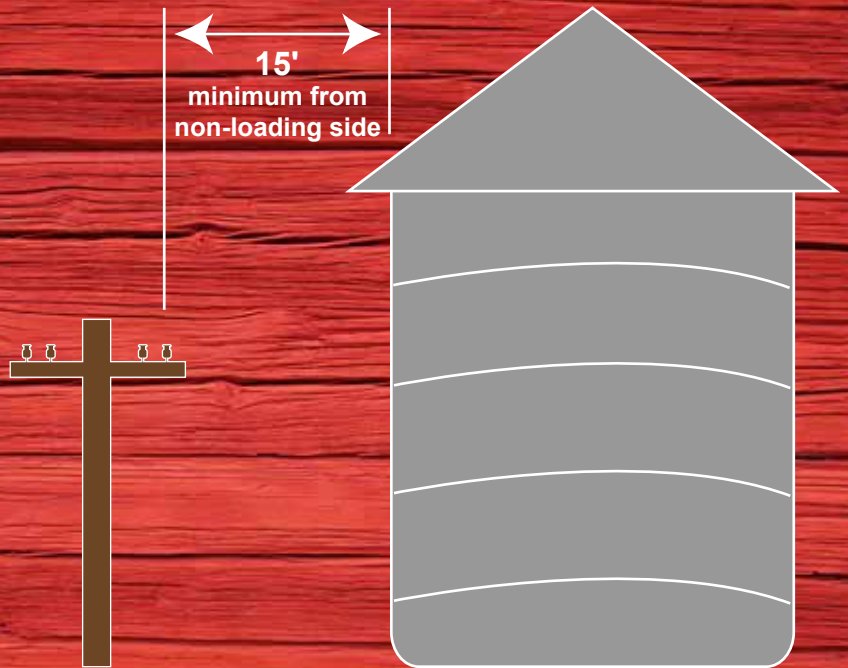
|      |         |
|------|---------|
| 2015 | 17 days |
| 2014 | 11 days |
| 2013 | 21 days |
| 2012 | 40 days |

## **Improving energy efficiency?**

Some irrigation energy efficiency improvements may qualify for an EnergyWise incentive payment. If you made improvements in 2016 or are considering work in the fall, contact Dawson PPD for more information. Call 800-752-8305 or 308-324-2386.

# Look up for hazards

- Use a spotter when operating large machinery near power lines.
- Use care when raising augers or the bed of grain trucks around power lines.
- Keep equipment at least 10 feet from power lines — at all times, in all directions.
- Inspect the height of farm equipment to determine clearance.
- Always remember to lower extensions when moving loads.
- Never attempt to move a power line out of the way or raise it for clearance.



Please contact Dawson PPD's Engineering Department before you build or modify grain storage.

Call 308-324-2386 or 800-752-8305.

## *Are your grain storage facilities safe?*

As rewarding as it may be, farming is an extremely difficult job—and it ranks among the top 10 most dangerous professions in the United States. At Dawson PPD, safety is top priority for all—our employees and customers.

Our farmers work hard to get the job done, and sometimes it's easy to forget all the necessary steps to take when practicing safe operations.

Whether you're purchasing new grain bins or remodeling areas that contain existing ones, proximity to overhead power lines must be a considered factor.

**Safe clearance.** The National Electrical Safety Code requires a 15-foot minimum distance from the power line to the grain bin wall on the non-loading side of the bin. Dawson PPD advises that the loading and unloading equipment be on the side of the bin farthest away from the power line.

**Filling and unloading grain bins.** High-voltage power lines are not insulated, so it's important to remember to maintain an adequate high-wire clearance when using a portable auger, conveyor or elevator to fill your grain bin.

**Moving equipment near grain bins.** When moving equipment, such as a hopper or a scaffold, be aware of nearby power lines. Remember to maintain a 10-foot clearance to ensure safety.

Accidents can happen in a split-second, which is why Dawson PPD reminds you to always use caution when working near power lines.

## ***Important dates and deadlines***

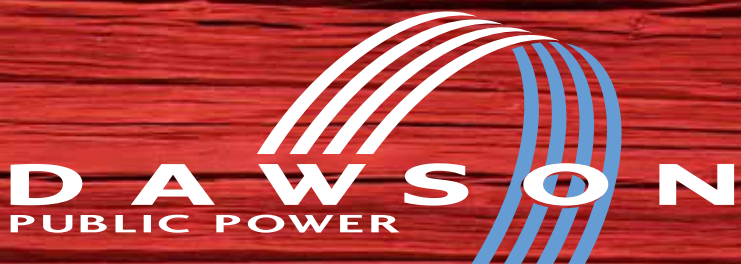
Deadline to select or change a load control option  
**March 31, 2016**

Deadline to have a new irrigation service added to the list for construction for the 2016 season\*  
**March 31, 2016**

HP fixed charges due  
**April 25, 2016**

Energy charges due  
**November 28, 2016**

\*Estimate must be approved, contract signed and aid to construction costs paid.



*today's energy. tomorrow's vision.*

## ***Load Management Announcements***

**KRVN AM 880** Radio 8:29 a.m.,  
M-Sat. and as needed on Sunday

**Dawsonpower.com**

**Email\*\***

**Twitter**

**Text message\*\***

\*\* Sign up for load management email or text messages, visit the notifications page, listed under the irrigation tab at [www.dawsonpower.com](http://www.dawsonpower.com). Standard messaging rates from your mobile phone provider apply.